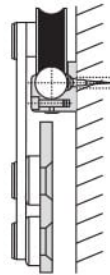


• **CKS-83A-1**
Sliding door roller

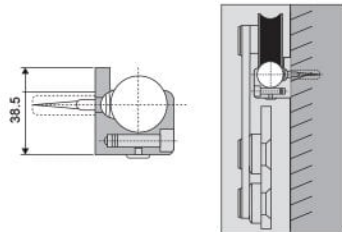


Fit for glass thickness : 10, 12mm
Material : Stainless Steel
Finish : Satin Stainless Steel (SSS)

• **CKS-83A-5 / 5A**
Floor guide

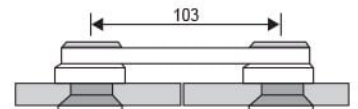


• **CKS-83A-2**
Wall connector for track



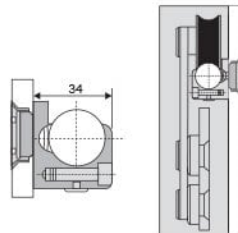
Fit for glass thickness : 10, 12mm
Material : Stainless Steel
Finish : Satin Stainless Steel (SSS)

• **CKS-83A-6**
Fixed Fittings



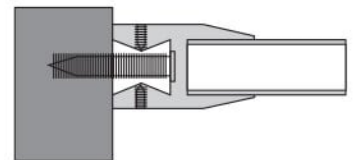
Fit for glass thickness : 10, 12mm
Material : Stainless Steel
Finish : Satin Stainless Steel (SSS)

• **CKS-83A-3**
Glass connector for track



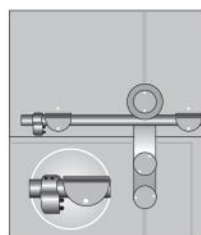
Fit for glass thickness : 10, 12mm
Material : Stainless Steel
Finish : Satin Stainless Steel (SSS)

• **CKS-83A-7**
Wall connector for track



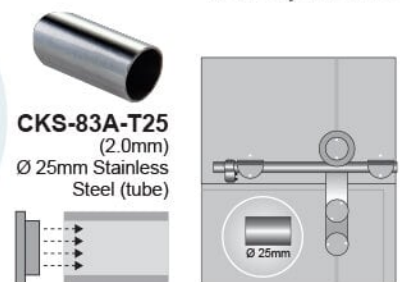
Fit for glass thickness : 10, 12mm
Material : Stainless Steel
Finish : Satin Stainless Steel (SSS)

• **CKS-83A-4**
Door stopper (L/R)



Fit for glass thickness : 10, 12mm
Material : Stainless Steel
Finish : Satin Stainless Steel (SSS)

• **CKS-83A-8**
End cap Ø25mm



Fit for glass thickness : 10, 12mm
Material : Stainless Steel
Finish : Satin Stainless Steel (SSS)