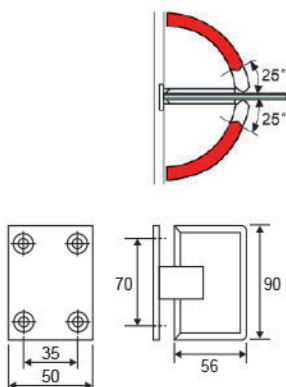
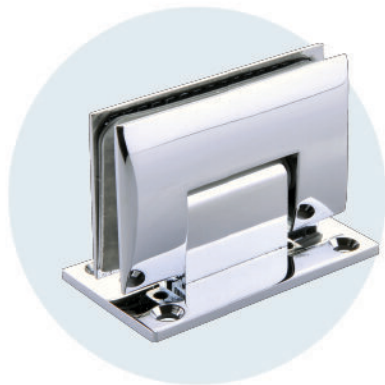
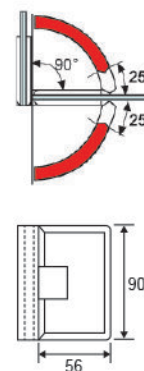
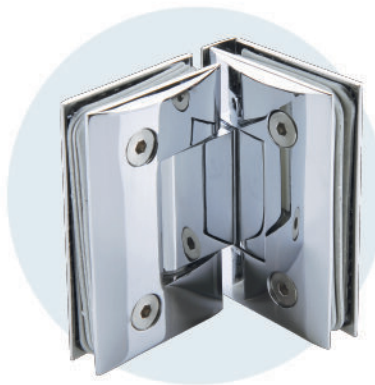


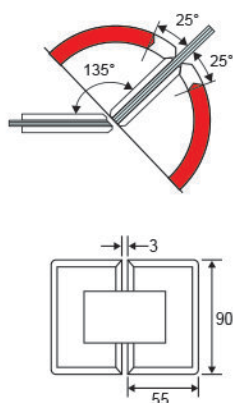
• **CKS-301B**
Glass to wall



• **CKS-304B**
Glass to glass (90°)

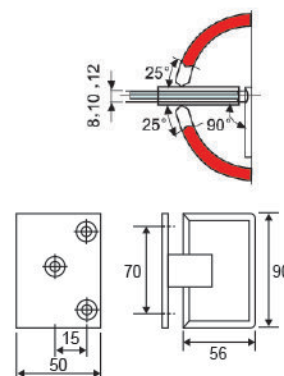


• **CKS-302B**
Glass to glass (135°)

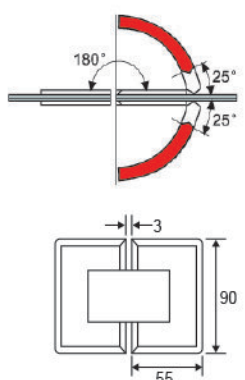


(The glass angle of fixed panel need to cut 45° when used in CKS 302 135° hinge)

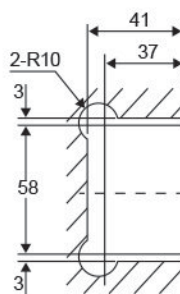
• **CKS-305B**
Glass to wall (offset)



• **CKS-303B**
Glass to glass (180°)

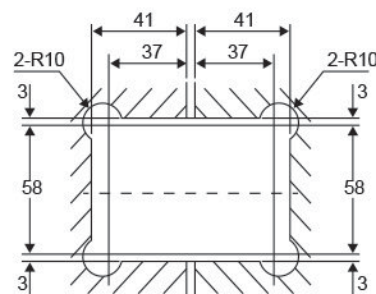


Glass preparation for:
CKS-301B / 305B



Self return from 25° (either direction)
Fit for door thickness : 8, 10mm
Door load up to 45kg
Material : Brass
Finish : Bright Chrome Plated (CP)

Glass preparation for:
CKS-302B / 303B / 304B



Glass preparation detail
(The glass angle of fixed panel need to cut 45° when used in CKS 302 135° hinge)

* Please refer the glass technical information section at the page no.112 to 115.