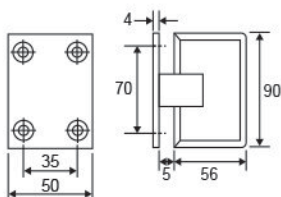
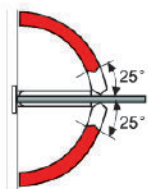
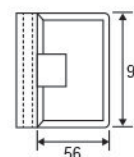
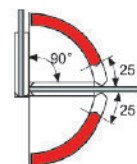


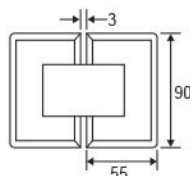
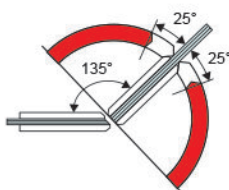
• **CKS-301A**  
Glass to wall



• **CKS-304A**  
Glass to glass (90°)

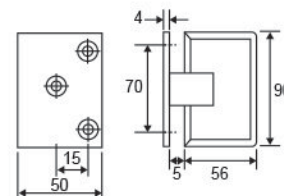
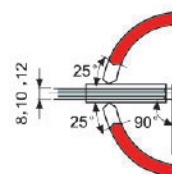


• **CKS-302A**  
Glass to glass (135°)

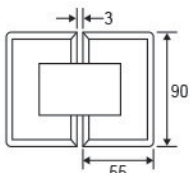
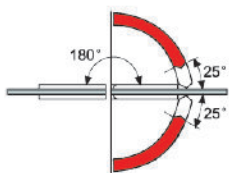


(The glass angle of fixed panel need to cut 45° when used in CKS 302 135° hinge)

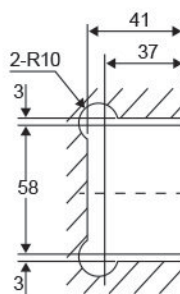
• **CKS-305A**  
Glass to wall (offset)



• **CKS-303A**  
Glass to glass (180°)

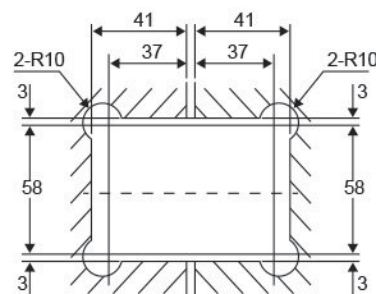


Glass preparation for:  
CKS-301A / 305A



Self return from 25° (either direction)  
Fit for door thickness : 8, 10mm  
Door load up to 45kg  
Material : Brass  
Finish : Bright Chrome Plated (CP)

Glass preparation for:  
CKS-302A / 303A / 304A



Glass preparation detail  
(The glass angle of fixed panel need to cut 45° when used in CKS 302 135° hinge)

\* Please refer the glass technical information section at the page no.112 to 115.