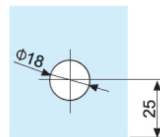
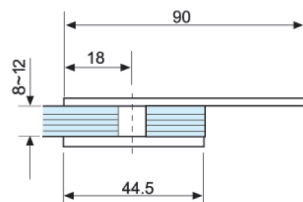
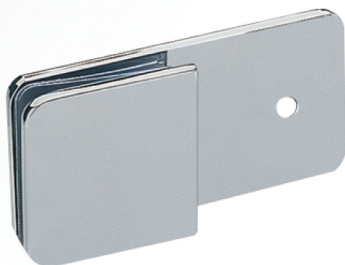


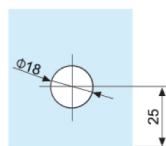
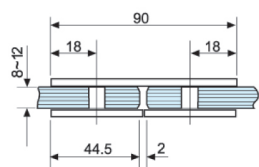
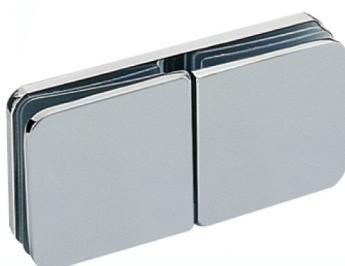
## GLASS CONNECTORS



### • CKS-723

Glass to wall

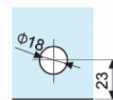
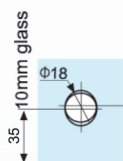
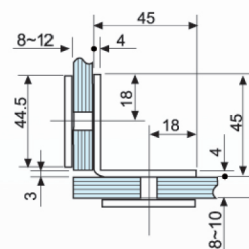
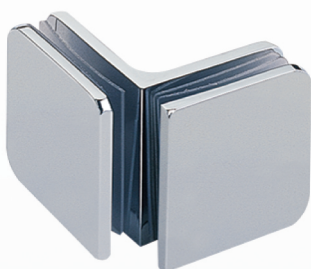
Fit for glass thickness : 8, 10, 12mm  
Material : Stainless Steel  
Finish : Polished Stainless Steel (PSS)



### • CKS-724

Glass to glass (180°)

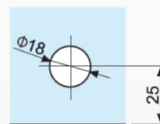
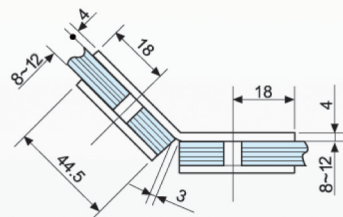
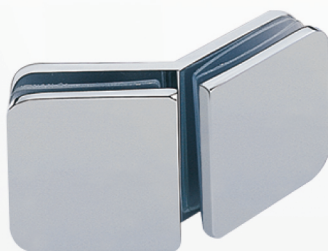
Fit for glass thickness : 8, 10, 12mm  
Material : Stainless Steel  
Finish : Polished Stainless Steel (PSS)



### • CKS-725

Glass to glass (90°)

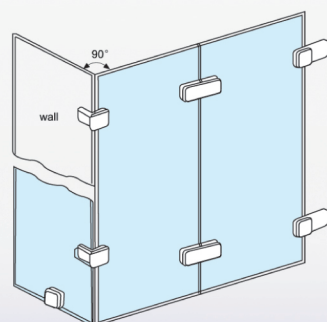
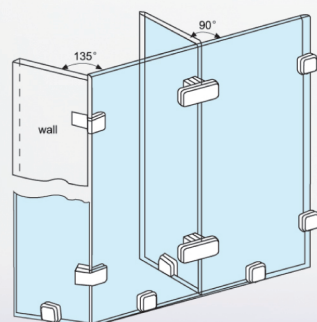
Fit for glass thickness : 8, 10, 12mm  
Material : Stainless Steel  
Finish : Polished Stainless Steel (PSS)



### • CKS-726

Glass to glass (135°)

Fit for glass thickness : 8, 10, 12mm  
Material : Stainless Steel  
Finish : Polished Stainless Steel (PSS)



Fit for glass thickness : 8, 10, 12mm  
Material : Stainless Steel  
Finish : Polished Stainless Steel (PSS)